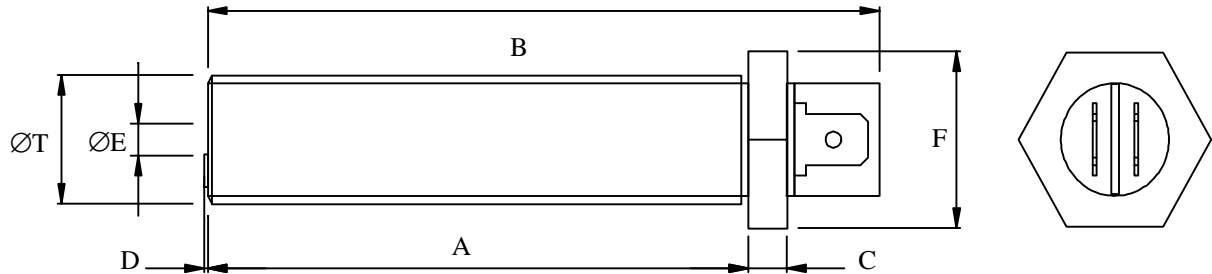




# Single Coil – Magnetic Pickups

Genset Controls - Timers - Monitors - Trips - Battery Charging - Spares & Accessories – CustomProducts

Used for speed sensing in rotating machinery, they have numerous applications spanning many industries. The coil is electrically isolated from the brass body.



ØT = diameter of threaded section

ØE = diameter of the pole piece

'F' = dimension across the flats

B and D are 'nominal' values

## Mechanical Specification

dimensions in mm unless stated otherwise

Part Number	A	B	C	D	F	ØE	ØT
MPU070T	70	88	5	0.4	22	3.17	5/8" x 18 tpi UNF-2A
MPU150T	150	168	5	0.4	22	3.17	5/8" x 18 tpi UNF-2A
MPU070T-M16	70	88	5	0.4	22	3.17	M16 x 1.5 6g
Main Body Material	Brass						
End Bobbin Face	Glass Filled Nylon or Polypropylene						
Locknut	1 off supplied as standard						

## Electrical Specification

Coil Resistance	350 ohms nominal
Inductance	100mH nominal each coil
Operating Temperature Range	-20°C to + 120°C
Voltage Output	20v peak-peak see note 1
Termination	2 x 1/4" Push-on Blade
Mating connector	2 x 1/4" Push-on Blade Receptacle (industry standard item - not supplied)

Note 1. Nominal output is a typical peak to peak voltage measured across a 10K load using a 60 tooth mild steel gear wheel of Ø6", rotating at 1000 rpm and with an air gap setting of 0.01".

## Ordering Information

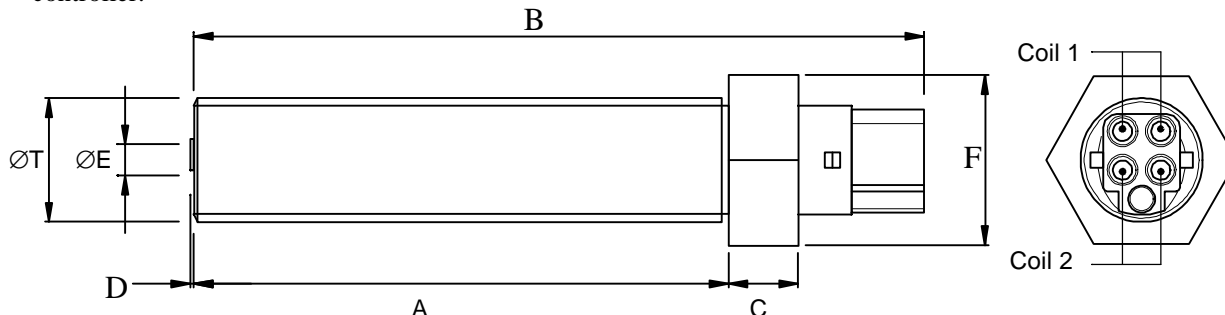
Stock Number					Comment
MPU070T					Normally ex-stock
MPU070T-M16					Normally ex-stock
MPU150T					Normally ex-stock

# Dual Coil – Magnetic Pickups

Genset Controls - Timers - Monitors - Trips - Battery Charging - Spares & Accessories – Custom Products

Each coil is independent and electrically isolated from the brass body.

Typically used in engine applications where separate speed signals are required for the governor and the system controller.



ØT = diameter of threaded section  
 ØE = diameter of the pole piece

'F' = dimension across the flats  
 B and D are 'nominal' values

### Mechanical Specification

dimensions in mm unless stated otherwise

Part Number	A	B	C	D	F	ØE	ØT
MPU070AD	70	101	9.1	0.4	22	3.17	5/8" x 18 tpi UNF-2A
MPU070AD-M16	70	101	9.1	0.4	22	3.17	M16 x 1.5 6g
Main Body Material	Brass						
End Bobbin Face	Glass Filled Nylon or Polypropylene						
Locknut	1 off supplied as standard						

### Electrical Specification

Coil Resistance	450 ohms nominal each coil
Inductance	100mH nominal each coil
Operating Temperature Range	-20°C to + 120°C
Voltage Output	20v peak-peak see note 1
Termination	4-way Grote & Hartmann
Mating Connector	Grote & Hartmann, assembled and complete with 3 metre screened cable
Wire Identification	Coil-1 = Black, Green/Yellow. Coil-2 = White, Yellow.

Note 1. Nominal output is a typical peak to peak voltage measured across a 10K load using a 60 tooth mild steel gear wheel of Ø6", rotating at 1000 rpm and with an air gap setting of 0.01".

### Ordering Information

Stock Number					Comment
MPU070AD					Normally ex-stock
MPU070AD-M16					Please contact sales for availability



## CAPRICORN CONTROLS LIMITED

INDUSTRIAL ELECTRONIC ENGINEERS  
 SPECIALIST CONTROLS FOR ENGINE APPLICATIONS  
 Thorpe Close, Banbury, Oxon., OX16 4SW. England  
 Tel: +44 (0) 1295 272360 Fax: +44 (0) 1295 264766  
 E-mail: [sales@capricorn-controls.com](mailto:sales@capricorn-controls.com) Web: [www.capricorn-controls.com](http://www.capricorn-controls.com)

Keystart, Remote Start, Start-on-Demand, Mains Failure, Mutual Standby & Multi-set Controllers.  
 Annunciators and Lamp Modules. Voltage, Current, Frequency, Speed, and Temperature Monitors.  
 Timers. Transport Refrigeration Spares. Batteries, Battery Chargers and Power Supplies. Spares and  
 Accessories. Customised Products and Bespoke Designs.